



Government of India  
Ministry of Earth Sciences



India Meteorological Department

### PRESS RELEASE-3

Time of issue: 1230 hours IST

Dated: 5<sup>th</sup> August, 2024

**Sub: (A) Depression over northeast Rajasthan and neighbourhood and  
(B) Low Pressure Area over Southwest Rajasthan & neighbourhood  
became less marked**

#### **(A) Depression over northeast Rajasthan and neighbourhood**

Yesterday's deep depression over northeast Madhya Pradesh and adjoining south Uttar Pradesh moved west-northwestwards, weakened into a depression in the morning (0530 hours IST) and lay centered at 0830 hours IST of today, the 5<sup>th</sup> August over Northeast Rajasthan and neighbourhood near latitude 26.5°N and longitude 75.6°E, about 40 km south-southwest of Jaipur (Rajasthan), 100 km east of Ajmer (Rajasthan), 130 km south-southeast of Sikar (Rajasthan) and 280 km southeast of Bikaner (Rajasthan).

It is likely to continue to move west-northwestwards across North Rajasthan and weaken further into a well marked low pressure area during next 12 hours.

#### **(B) Low Pressure Area over Southwest Rajasthan & neighbourhood became less marked**

Yesterday's low pressure area over **Southwest Rajasthan & adjoining South Pakistan** moved away westwards towards Pakistan in the same evening (1730 hours IST) of 4<sup>th</sup> August and became less marked over **South Pakistan and adjoining Northeast Arabian Sea** in the morning (0530 hours IST) of today, the 5<sup>th</sup> August 2024.

#### **Warnings (Graphics Attached):**

##### **(i) Rainfall Warning:**

###### **East Rajasthan:**

Light to moderate rainfall at most places is very likely with **heavy to very heavy rainfall** at isolated places on 5<sup>th</sup> and heavy rainfall at isolated places on 6<sup>th</sup> August.

###### **West Rajasthan:**

Light to moderate rainfall at most places is very likely with **heavy to extremely heavy rainfall** at isolated places on 5<sup>th</sup> and heavy to very heavy rainfall at isolated places on 6<sup>th</sup> August.

Contact: Cyclone Warning Division, Office of the Director General of Meteorology, India Meteorological Department, Ministry of Earth Sciences.

E-mail: cyclonewarningdivision@gmail.com, Website: [rsmcnewdelhi.imd.gov.in](http://rsmcnewdelhi.imd.gov.in)

Spatial rainfall distribution: Isolated: <25%, A few: 26-50%, Many: 51-75%, Most: 76-100%

Rainfall amount (mm): Heavy rain: 64.5 – 115.5, Very heavy rain: 115.6 – 204.4, Extremely heavy rain: 204.5 or more.

**Gujarat region:**

Light to moderate rainfall at most places is very likely with **heavy to very heavy rainfall** at a few places on 5<sup>th</sup> and **heavy rainfall** at isolated places on 6<sup>th</sup> August.

**Saurashtra & Kutch:**

Light to moderate rainfall at many places is very likely with heavy rainfall at isolated places on 5<sup>th</sup> August.

**West Madhya Pradesh:**

Light to moderate rainfall at most places is very likely with **heavy rainfall** at isolated places on 05<sup>th</sup> August.

**Madhya Maharashtra:**

Light to moderate rainfall at most places is very likely with **heavy to very heavy rainfall** at a few places on 5<sup>th</sup> and **heavy rainfall** at isolated places on 6<sup>th</sup> August.

**Konkan & Goa:**

Light to moderate rainfall at most places with **heavy rainfall** at a few places is very likely on 5<sup>th</sup> & 6<sup>th</sup> August.

**(ii) Flash Flood Guidance (Graphics Attached):****24 hours Outlook for the Flash Flood Risk (FFR) till 0530 IST of 06-08-2024 :**

Low to Moderate flash flood risk likely over few watersheds & neighbourhoods of East Rajasthan and West Rajasthan Met Sub-divisions during next 24 hours. Surface runoff/ Inundation may occur at some fully saturated soils & low-lying areas over (Area of Concern) AoC as shown in map due to expected rainfall occurrence in next 24 hours.

Low to Moderate flash flood risk likely over few watersheds & neighbourhoods of South Gujarat Region and Konkan & Goa Met Sub-divisions during next 24 hours. Surface runoff/ Inundation may occur at some fully saturated soils & low-lying areas over AoC as shown in map due to expected rainfall occurrence in next 24 hours.

**(iii) Wind warning:**

- Strong wind speed reaching 30-40 kmph gusting to 50 kmph is very likely over Rajasthan and adjoining West Madhya Pradesh on 5<sup>th</sup> August.

**(iv) Impact Expected**

- Localized Flooding of roads, water logging in low lying areas and closure of underpasses mainly in urban areas of the above region.
- Occasional reduction in visibility due to heavy rainfall.
- Disruption of traffic in major cities due to water logging in roads leading to increased travel time.
- Surface runoff/ inundation may occur at some fully saturated soils & low-lying areas
- Minor damage to kutchha roads.

Contact: Cyclone Warning Division, Office of the Director General of Meteorology, India Meteorological Department, Ministry of Earth Sciences.

E-mail: cyclonewarningdivision@gmail.com, Website: [rsmcnewdelhi.imd.gov.in](http://rsmcnewdelhi.imd.gov.in)

Spatial rainfall distribution: Isolated: <25%, A few: 26-50%, Many: 51-75%, Most: 76-100%

Rainfall amount (mm): Heavy rain: 64.5 – 115.5, Very heavy rain: 115.6 – 204.4, Extremely heavy rain: 204.5 or more.

- Possibilities of damage to vulnerable structure.
- Localized Landslides/Mudslides/landslips/mud slips/land sinks/mud sinks.
- Damage to horticulture and standing crops in some areas due to inundation.
- It may lead to riverine flooding in some river catchments (for riverine flooding please visit Web page of CWC)

**(v) Action Suggested**

- Check for traffic congestion on your route before leaving for your destination.
- Follow any traffic advisories that are issued in this regard.
- Avoid going to areas that face the water logging problems often.
- Avoid staying in vulnerable structure.

**(vi) Agromet advisories for Heavy Rainfall likely over various parts of the country**

- Make provision for draining out excess water from crop fields to avoid water stagnation in West Bengal, Sub Himalayan West Bengal, Odisha, Jharkhand, Bihar, Rajasthan, Madhya Pradesh, Chhattisgarh.
- Provide mechanical support to horticultural crops and staking to vegetables.

**Next press release will be issued at 1430 hrs IST of tomorrow 6<sup>th</sup> August, 2024.**

*For regular updates kindly visit [www.rsmcnewdelhi.imd.gov.in](http://www.rsmcnewdelhi.imd.gov.in) and [www.mausam.imd.gov.in](http://www.mausam.imd.gov.in)*

## Annexure - I

### 24 hours cumulative realised rainfall (in cm) ending at 0830 hours IST of 5th August

**East Rajasthan:** Nagrarfort (Tonk) 32, Hindoli (Bundi) 22, Jahazpur (Bhilwara) 21, Bundi (Bundi) 19, Sarwar (Ajmer) 18, Kekri (Ajmer) 18, Sawar (Ajmer) 17, Geola Sr (Ajmer) 17, Deoli (Tonk) 17, Kishanganj (Baran) 16, Mangliawas (Ajmer) 15, Mangrol (Baran) 15, Bakani (Jhalawar) 13, Pisagan (Ajmer) 13, Uniara / Aligarh (Tonk) 12, Deogarh (Rajsamand) 12, Bhinay (Ajmer) 11, Badesar (Chittorgarh) 11, Shahpura (Bhilwara) 11, Baran (Baran) 11, Malpura (Tonk) 11, Patan (Bundi) 11, Mandalgarh (Bhilwara) 11, Nayanagar/beawar (Ajmer) 11, Todaraisingh (Tonk) 11, Talera (Bundi) 11, Bhainsroadgarh (Chittorgarh) 10, Nainwa (Bundi) 10, Tatgarh (Ajmer) 10, Pratapgarh (Pratapgarh) 10, Tonk Tehsil (Tonk) 10, Atru (Baran) 10, Nimbahera (Chittorgarh) 10, Masuda (Ajmer) 9, Pachpahar (Jhalawar) 9, Pushkar (Ajmer) 9, Jhalarampatan (Jhalawar) 9, Piplu (Tonk) 9, Nasirabad (Ajmer) 9, Bijoliya (Bhilwara) 8, Kotri (Bhilwara) 8, Pirawa (Jhalawar) 8, Shahabad (Baran) 8, Ladpura (Kota) 8, Indergarh (Bundi) 8, Gangdhar (Jhalawar) 8, Aklera (Jhalawar) 8, Chothkabarwara (Sawai Madhopur) 7, Degod (Kota) 7, Kota (Kota) 7, Mavli (Udaipur) 7, Anta (Baran) 7, Ramganjmandi (Kota) 7, Arai (Ajmer) 7, Railmagra (Rajsamand) 7, Chittorgarh (Chittorgarh) 7, Begu (Chittorgarh) 7, Jhalawar (Jhalawar) 7, Rashmi (Chittorgarh) 7, Dug (Jhalawar) 7,

**West Rajasthan:** Sojat (Pali) 26, Degana (Nagaur) 10, Raipur (Pali) 9, Bilara (Jodhpur) 9, Jaitran (Pali) 6,

**Gujarat Region:** Khergam (Navsari) 23, Dharampur (Valsad) 18, Kaprada (Valsad) 17, Dangs (Dangs) 16, Chikhli (Navsari) 15, Vansda (Navsari) 14, Waghai (Dangs) 14, Valsad (Valsad) 14, Dang (Dangs) 13, Pardi (Valsad) 13, Daman (Daman) 13, Subir (Dangs) 11, Dolvan (Tapi) 11, Valsad (Valsad) 11,

**Madhya Maharashtra:** Surgana (Nashik) 20, Lonavala (Pune) 15, Igatpuri (Nashik) 14, Peth (Nashik) 12, Mahabaleshwar- (Satara) 12, Ozharkheda - (Nashik) 11, Yaval (Jalgaon) 11, Trimbakshwar (Nashik) 10, Harsul (Nashik) 9, Paud Mulshi (Pune) 7, Velhe (Pune) 6, Dindori (Nashik) 6;

**East Madhya Pradesh:** Buxwaha (Chhatarpur) 15, Orchha (Niwari) 15, Hatta (Damoh) 14, Patera (Damoh) 12, Bina (Sagar) 12, Shahgarh (Sagar) 11, Malthone (Sagar) 11, Mohangarh (Tikamgarh) 9, Amarkantak (Anuppur) 9, Panagar (Jabalpur) 9, Khargapur (Tikamgarh) 8, Junnardeo (Chindwara) 8, Prithvipur (Niwari) 7, Badagaon Dhasan (Tikamgarh) 7, Palera (Tikamgarh) 7, Niwari (Niwari) 7,

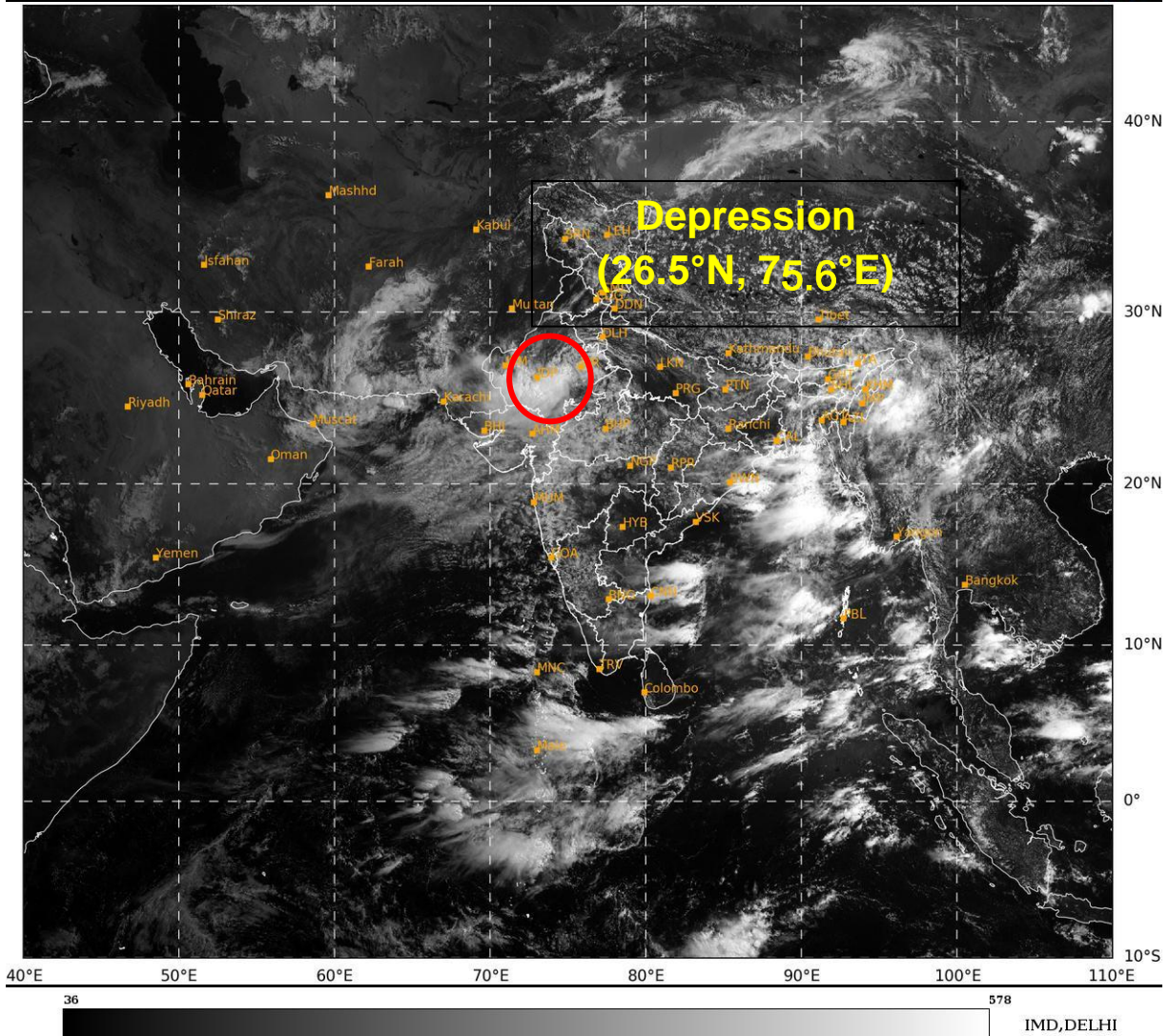
**West Madhya Pradesh:** Malhargarh (Mandsaur) 15, Karhal (Sheopur) 14, Jawad (Neemuch) 13, Pohri (Shivpuri) 13, Kolaras (Shivpuri) 12, Sheopur-aws (Sheopur) 11, Karera (Shivpuri) 11, Pichhore (Shivpuri) 10, Bamori (Guna) 10, Zirapur (Rajgarh) 9, Narwar (Shivpuri) 9, Badoda (Sheopur) 9, Manasa (Neemuch) 9, Shivpuri (Shivpuri) 9, Kayampur (Mandsaur) 9, Raghogarh (Guna) 8, Dhundhadaka (Mandsaur) 8, Biaora (Rajgarh) 8, Khirkiya-arg (Harda) 8, Barod (Agar-Malwa) 8, Bhanpura (Mandsaur) 7, Bhimpur (Betul) 7, Nepanagar (Burhanpur) 7, Susner (Agar-Malwa) 7, Bairad (Shivpuri) 7, Neemuch (Neemuch) 7, Shamgarh (Mandsaur) 7, Badarwas (Shivpuri) 7, Sitamau (Mandsaur) 7, Pachore (Rajgarh) 7,

**Konkan & Goa:** Vikramgad (Palghar) 15, Jawhar (Palghar) 15, Mokheda (Palghar) 9, Talasari (Palghar) 9, Khalapur (Raigad) 8, Pen (Raigad) 8, Palghar (Palghar) 7, Matheran (Raigad) 7,

# Annexure - II

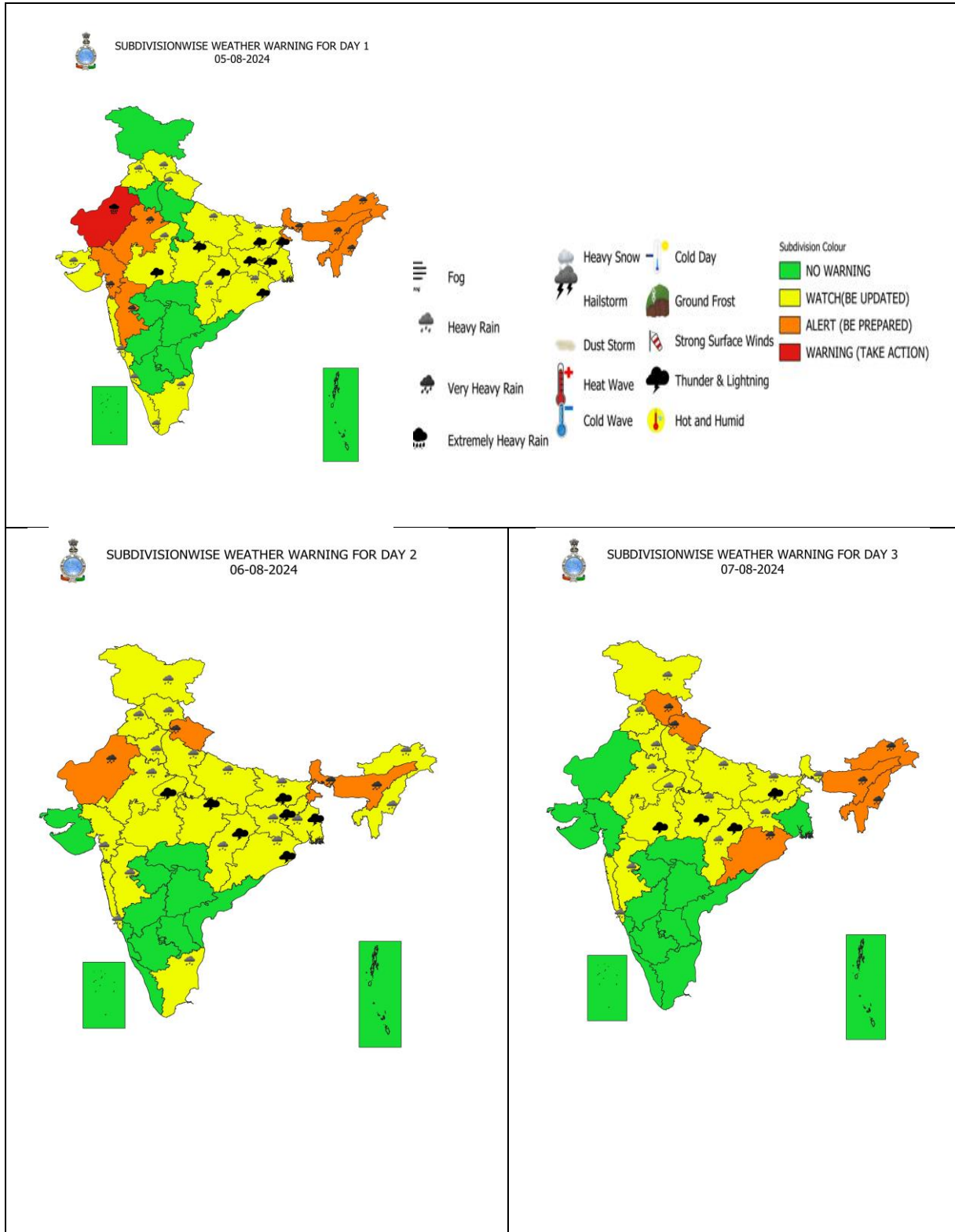
SAT : INSAT-3DR IMG  
Visible Count 0.65 um  
LIC Mercator

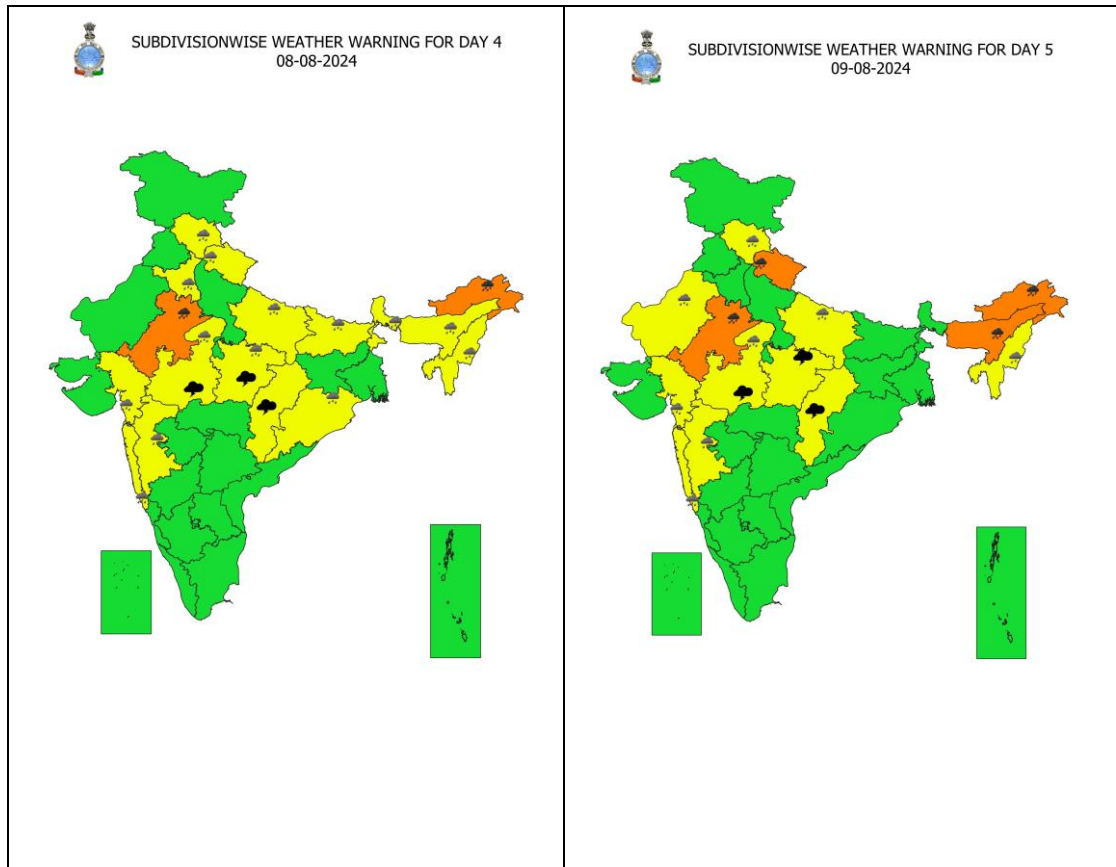
05-08-2024/(0415 to 0442) GMT  
05-08-2024/(0945 to 1012) IST



Contact: Cyclone Warning Division, Office of the Director General of Meteorology, India Meteorological Department, Ministry of Earth Sciences.  
E-mail: cyclonewarningdivision@gmail.com, Website: [rsmcnewdelhi.imd.gov.in](http://rsmcnewdelhi.imd.gov.in)  
Spatial rainfall distribution: Isolated: <25%, A few: 26-50%, Many: 51-75%, Most: 76-100%  
Rainfall amount (mm): Heavy rain: 64.5 – 115.5, Very heavy rain: 115.6 – 204.4, Extremely heavy rain: 204.5 or more.

# Warning Graphics



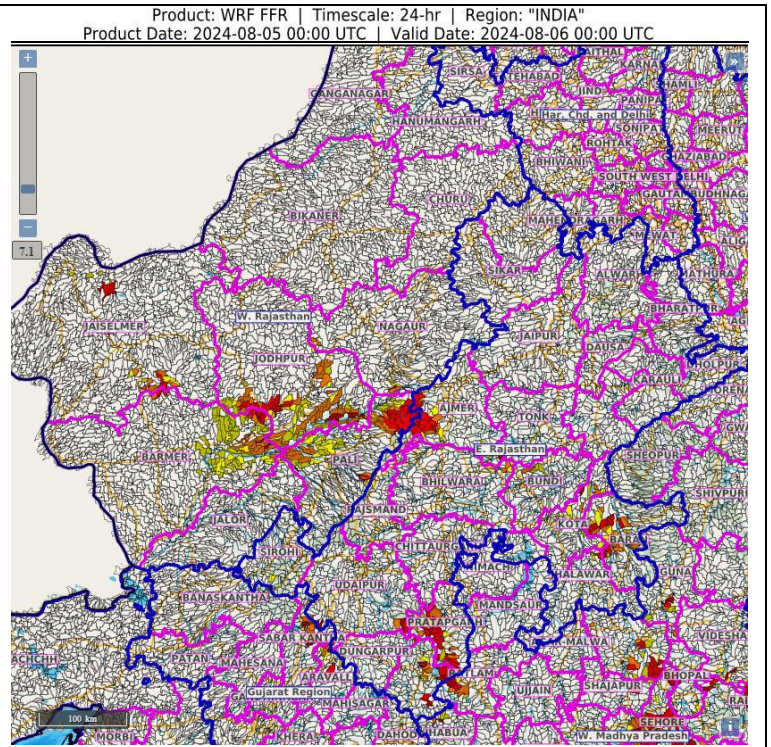


- Action may be taken based on **ORANGE AND RED** COLOUR warnings.
- Vulnerable regions likely urban and hilly areas action may be initiated for heavy rainfall warning.
- As the lead period increases forecast accuracy decreases.

## Flash Flood Guidance

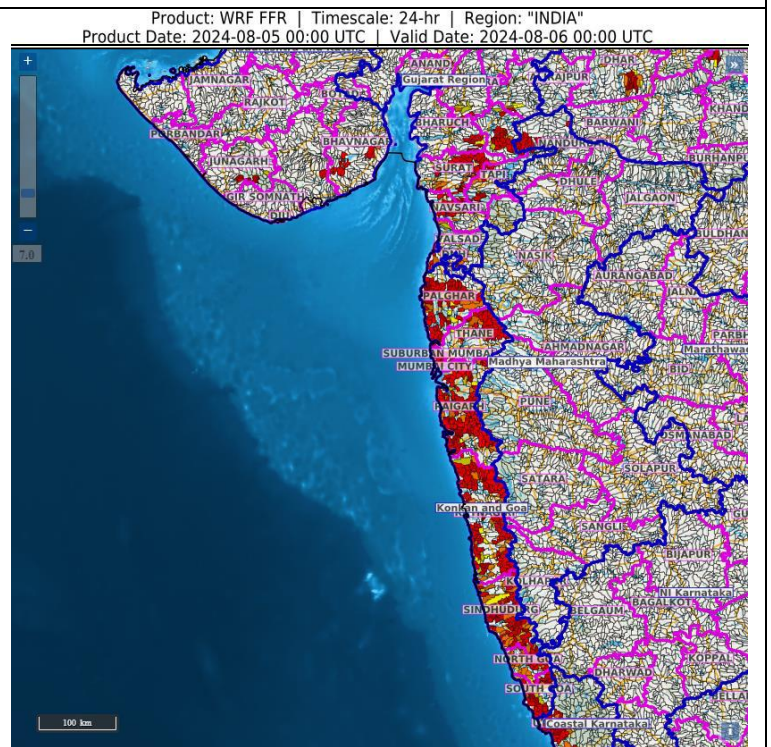
### 24 hours Outlook for the Flash Flood Risk (FFR) till 0530 IST of 06-08-2024 :

**Low to Moderate flash flood risk** likely over few watersheds & neighbourhoods of **East Rajasthan** and **West Rajasthan** Met Sub-divisions during next 24 hours. Surface runoff/ Inundation may occur at some fully saturated soils & low-lying areas over AoC as shown in map due to expected rainfall occurrence in next 24 hours.



### 24 hours Outlook for the Flash Flood Risk (FFR) till 0530 IST of 06-08-2024 :

**Low to Moderate flash flood risk** likely over few watersheds & neighbourhoods of **South Gujarat Region** and **Konkan & Goa** Met Sub-divisions during next 24 hours. Surface runoff/ Inundation may occur at some fully saturated soils & low-lying areas over AoC as shown in map due to expected rainfall occurrence in next 24 hours.



### Flash Flood Risk

	<b>High Risk (Take Action)</b>
	<b>Moderate Risk (Be Prepared)</b>
	<b>Low Risk (Be Updated)</b>

Contact: Cyclone Warning Division, Office of the Director General of Meteorology, India Meteorological Department, Ministry of Earth Sciences.

E-mail: [cyclonewarningdivision@gmail.com](mailto:cyclonewarningdivision@gmail.com), Website: [rsmcnwdelhi.imd.gov.in](http://rsmcnwdelhi.imd.gov.in)

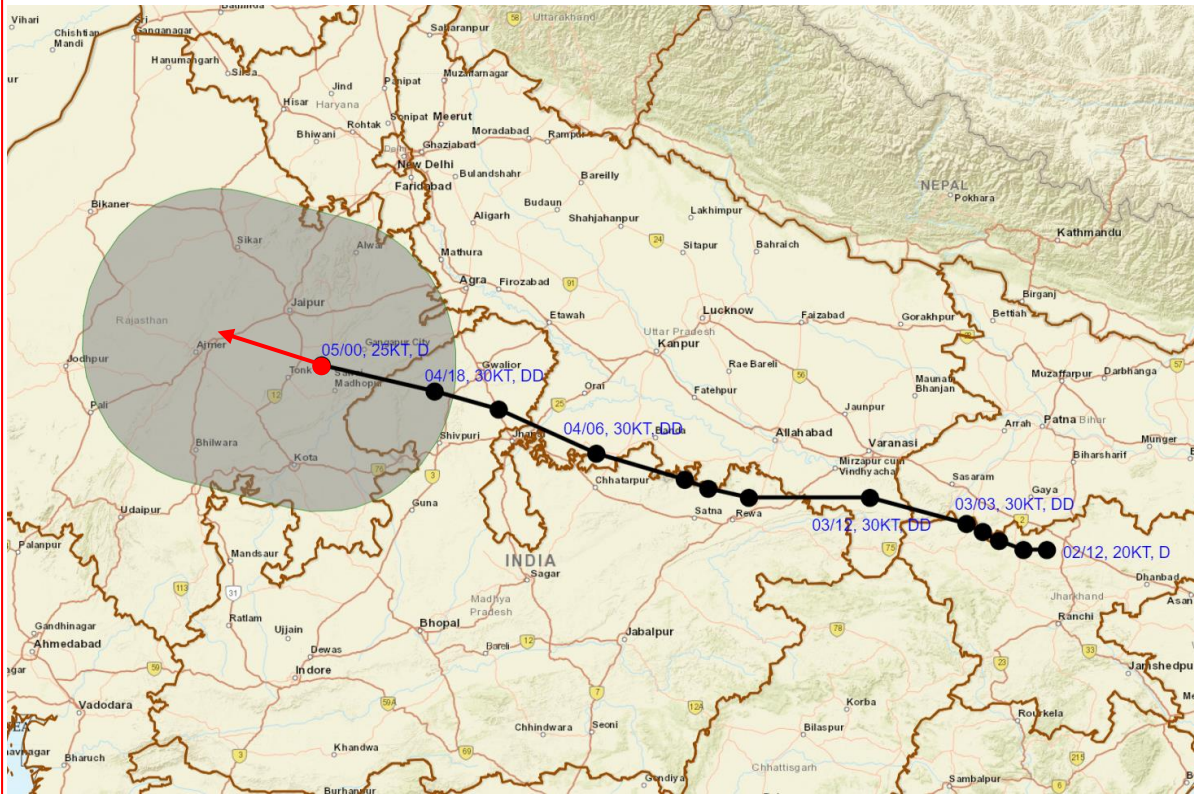
Spatial rainfall distribution: Isolated: <25%, A few: 26-50%, Many: 51-75%, Most: 76-100%

Rainfall amount (mm): Heavy rain: 64.5 – 115.5, Very heavy rain: 115.6 – 204.4, Extremely heavy rain: 204.5 or more.





**OBSERVED AND FORECAST TRACK ALONGWITH WIND DISTRIBUTION IN ASSOCIATION WITH DEPRESSION OVER NORTHEAST RAJASTHAN AND NEIGHBOURHOOD BASED ON 0830 IST (0300 UTC) OF 05th AUGUST,**



DATE/TIME IN UTC  
 IST=UTC + 0530  
 L: LOW PRESSURE AREA  
 WML: WELL MARKED LOW PRESSURE AREA  
 D: DEPRESSION (17-27 KT)  
 DD: DEEP DEPRESSION (28-33 KT)  
 CS: CYCLONIC STORM (34-47 KT)  
 SCS: SEVERE CYCLONIC STORM (48-63KT)  
 VSCS: VERY SEVERE CYCLONIC STORM (64-89 KT)  
 ESCS: EXTREMELY SEVERE CYCLONIC STORM (90-119 KT)  
 SuCS: SUPER CYCLONIC STORM (≥ 120 KT)

● LESS THAN 34 KT  
 ○ 34-47 KT  
 ⊙ ≥ 48 KT  
 — OBSERVED TRACK  
 — FORECAST TRACK  
 — CONE OF UNCERTAINTY  
 AREA OF MAXIMUM SUSTAINED WIND SPEED:  
 30-40 KMPH GUSTING TO 50 KMPH

Contact: Cyclone Warning Division, Office of the Director General of Meteorology, India Meteorological Department, Ministry of Earth Sciences.

E-mail: cyclonewarningdivision@gmail.com, Website: [rsmcnwdelhi.imd.gov.in](http://rsmcnwdelhi.imd.gov.in)

Spatial rainfall distribution: Isolated: <25%, A few: 26-50%, Many: 51-75%, Most: 76-100%

Rainfall amount (mm): Heavy rain: 64.5 – 115.5, Very heavy rain: 115.6 – 204.4, Extremely heavy rain: 204.5 or more.